

14-3-3 zeta/delta Mouse Monoclonal Ab

[Images\(6\)](#)

| | | |
|---------------|-----------------|-----------------------|
| Cat.#: BF8143 | Concn.: ~1mg/ml | Mol.Wt.: 28kDa |
| Size: 100ul | Source: Mouse | Clonality: Monoclonal |

Application: WB 1:1000-1:5000
 *The optimal dilutions should be determined by the end user.

Reactivity: Human,Mouse,Rat

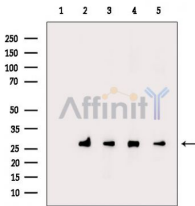
Storage: Mouse IgG1 in phosphate buffered saline (without Mg²⁺ and Ca²⁺), pH 7.4, 150mM NaCl, 0.02% sodium azide and 50% glycerol. Store at -20 °C. Stable for 12 months from date of receipt.

Purification: Affinity-chromatography.

Immunogen: A synthesized peptide derived from human 14-3-3 zeta/delta, corresponding to a region within C-terminal amino acids.

Uniprot: P63104

Description: 14-3-3 zeta is a protein of the 14-3-3 family of proteins which mediate signal transduction by binding to phosphoserine-containing proteins.



Western blot analysis of extracts from various samples, using 14-3-3 zeta/delta Mouse Monoclonal Ab.

- Lane 1: Rat brain, blocked with antigen-specific peptides.
- Lane 2: Rat brain.
- Lane 3: Mouse spleen.
- Lane 4: Mouse muscle.
- Lane 5: Mouse heart.

IMPORTANT: For western blot, incubate membrane with diluted primary Ab in 5% w/v milk , 1X TBS, 0.1% Tween@20 at 4°C with gentle shaking, overnight.

For Research Use Only. Not for use in diagnostic and therapeutic procedures. Not for resale without express authorization.